

# andis®

## USE & CARE INSTRUCTIONS



### MODEL DBLC

LITERATURE PACKET #04983

Item pictured may differ from actual product  
El artículo ilustrado puede diferir del producto real  
Il est possible que l'article sur la photo soit différent du produit réel

## ENGLISH

Please read the following instructions before using your new Andis clipper. Give it the care that a fine, precision built instrument deserves and it will give you years of service.

### IMPORTANT SAFEGUARDS

When using an electrical appliance, basic precautions should always be followed, including the following: Read all instructions before using the Andis Clipper.

#### **DANGER:** To reduce the risk of electric shock:

1. Do not reach for an appliance that has fallen into water. Unplug immediately.
2. Do not use while bathing or in a shower.
3. Do not place or store appliance where it can fall or be pulled into a tub or sink. Do not place in or drop into water or other liquid.
4. Except when charging, always unplug this appliance after use.
5. Unplug this appliance before cleaning, removing or assembling parts.

#### **WARNING:** To reduce the risk of burns, fire electric shock, or injury to persons:

1. An appliance should never be left unattended when plugged in.
2. This appliance is not intended for use by persons (including children) with reduced physical, sensory or mental capabilities, or lack of experience and knowledge, unless they have been given supervision or instruction concerning use of the appliance by a person responsible for their safety.
3. Children should be supervised to ensure that they do not play with the appliance.
4. Use this appliance only for its intended use as described in

- this manual. Do not use attachments not recommended by Andis.
5. Never operate this appliance if it has a damaged cord or plug, if it is not working properly, if it has been dropped or damaged, or dropped into water. Return the appliance to an Andis Authorized Service Station for examination and repair.
  6. Keep the cord away from heated surfaces.
  7. Never drop or insert any object into any opening.
  8. Do not use outdoors or operate where aerosol (spray) products are being used or where oxygen is being administered.
  9. Do not use this appliance with a damaged or broken blade or comb, as injury to the skin may occur.
  10. To disconnect turn control to OFF then remove plug from outlet.
  11. Plug charger directly into an AC outlet. Do not use an extension cord.
  12. Use of a charger not sold by Andis may result in risk of fire, electric shock, or injury to person.
  13. Do not disassemble charger. Incorrect reassembly may result in a risk of electric shock or fire. When repair is required, send or take it to an Andis Authorized Service Station.
  14. The battery in this clipper is designed to provide maximum trouble-free life. However, like all batteries, it will eventually wear out. Do not attempt to replace battery. When repair or replacement is required, send or take it to an Andis Authorized Service Station.
  15. Batteries can be harmful to the environment if disposed of improperly. Many communities offer recycling or battery collection. Contact your local government about disposal practices in your area.
  16. **WARNING: Never touch both terminals on clipper with metal objects and/or body parts, as short circuit may result. Keep away from children. Failure to comply with these warnings could result in fire or serious injury.**

17. This appliance is intended for trimming purposes only.
18. During use, do not place or leave the appliance where it is expected to be: 1) Subject to damage by an animal or 2) exposed to the weather.

## SAVE THESE INSTRUCTIONS

THIS PRODUCT INTENDED FOR HOUSEHOLD USE

## OPERATING INSTRUCTIONS

- The battery is to only be replaced by an Andis Authorized Service Station.
- The battery must be removed from the appliance before it is recycled.
- The battery is to be recycled as a lithium-ion battery.

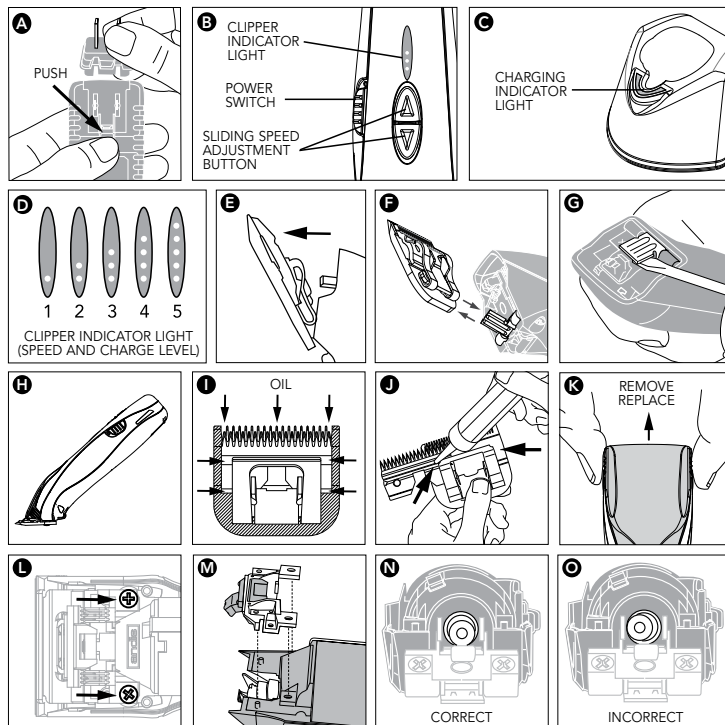
### UNIVERSAL AC/DC POWER ADAPTER

1. Remove the wall adapter and charger from the carton.
2. Note the charger comes standard with a universal AC voltage wall adapter and interchangeable plugs.
3. To attach the desired plug to the wall adapter, align the slots on the plug to the ribs on the wall adapter and slide into place. The plug will “click” into place when properly attached. To remove, locate the button marked “push” on the wall adapter. Press the button and slide the plug from the wall adapter. The plugs for the various countries all attach and remove using the same method (Figure A).
4. Connect the power cord to the back of the charger and then insert the transformer into an AC outlet.

### CHARGING UNIT

To charge, plug wall adapter into 100-240V, 50/60 cycle AC electrical outlet or as noted on the unit. Make sure the proper input plug is attached to the wall adapter. Plug power cord directly into back of charging stand. Place clipper into the pocket on the charging stand. The clipper has electrical contacts that touch electrical contacts in the charger. The weight of the unit will provide sufficient contact.

Before using your clipper for the first time, make sure the battery has been fully charged. Note that it is normal for the clipper and wall adapter to feel warm to the touch when charging. This is especially true if the battery has been deeply discharged as indicated by the Clipper Indicator Light turning red (Figure B) while the clipper is running. The clipper should be charged with the switch in the OFF position.



To start clipper, move power switch to ON position. To stop clipper, move power switch back to original position (Figure B).

### CHARGING STAND INDICATOR LIGHTS

When the battery is charging, the Charging Indicator Light will turn red. The Charging Indicator Light will turn green when the clipper is fully charged (Figure C). Under normal operation the Indicator lights on the clipper will always be dark when the unit is in the charger stand.

Note that the clipper can be removed at any time during the charging cycle without harming the clipper or battery.

CLIPPER INDICATOR LIGHTS (SPEED AND CHARGE LEVEL)

When the clipper is running, a green Clipper Indicator Light means the battery has a strong charge (Figure B). The light will turn yellow as the battery starts to run down, indicating the battery has only a partial charge remaining. When the light turns red, the battery may not hold enough charge to complete a large clipping job, and should be recharged as soon as possible. If the clipper powers OFF, move the power switch to the OFF position and place unit in the charging stand.

Automatically powering off protects the lithium-ion battery and is not a malfunction. The clipper will resume normal operation when it is recharged.

	Clipper Indicator Light	Charging Stand Indicator Light
<b>Clipper in Charging Stand</b>		
Fully Charged		Green
Charging		Red
Clipper in Stand with Power Switch On	Flashing Red	Red
Clipper in Stand		Flashing
<b>Clipper in Use</b>		
Full Charge	Green	
Medium Charge	Yellow	
Low Charge	Red	

Your clipper is equipped with five cutting speeds. The speeds are adjusted using the speed adjustment button on the front of the unit (Figure B). To start your clipper, move the power switch to the ON position. To increase your blade speed, slide the button toward the blade of the clipper. To decrease your blade speed, slide the button away from the blade of the clipper. You will see on the LED display that when you change the speed, the LED's adjust accordingly (Figure D). To shut your clipper OFF, move the power switch to the OFF position. The unit will power on in the last speed setting you were in when you turned the unit OFF.

**NOTE:** If the unit is placed in the charger stand with the power switch in the ON position the motor will stop and the Clipper Indicator Light (Figure B) will flash all five LED's in red. If this happens, remove the clipper from the charging stand and move the power switch to the OFF position. Once the switch is in the OFF position you can place the unit back in the charging stand.

**NOTE:** If charging stand indicator light is flashing, dirt or debris may have collected on the charging contacts of the clipper and/or the charging base, prohibiting proper electrical connection. To clean these contacts, use a soft, dry cloth to wipe them clean.

USER MAINTENANCE

The internal mechanism of your motor clipper has been permanently lubricated by the factory. Other than the recommended maintenance described in this manual, no other maintenance should be performed, except by Andis Company, or an Andis Authorized Service Station. **To find an Andis Authorized Service Station near you log on to [www.andis.com](http://www.andis.com) or contact our customer service department: 1-800-558-9441 (U.S.) or 1-800-335-4093 (Canada).**

REMOVING BLADE SET

To remove blade set, first make sure your clipper motor is switched off, then push down on blade with one or both thumbs (Figure E) and slide blade off blade hinge (Figure F). If your blade hinge should snap closed and is flush with the clipper, use a small standard screwdriver to pry the tongue of the hinge out (Figure G). **NOTE:** Hair may accumulate in the front cavity of the housing under the blade. If this happens, you can clean out the hair by brushing out the cavity with a small brush or an old toothbrush while the blade is off the clipper.

REPLACING OR CHANGING BLADE SET

To replace or change your blade set, slide the blade bracket onto the hinge of the clipper (Figure F), and with the clipper turned "ON", push the blade towards the clipper to lock into position.

BLADE TEMPERATURE

Due to the high speed nature of Andis clippers, please check for blade heat often, especially on close cutting blades. If blades are too hot, dip the blades only into Andis Blade Care Plus or apply Andis Cool Care Plus and then Andis Clipper Oil. If you have a detachable blade unit, you can change your blade in order to maintain a comfortable temperature; using multiple blades of the same size is popular among groomers.

CARE AND SERVICING OF YOUR ANDIS CLIPPER BLADES

Blades should be oiled before, **during**, and after each use. If your clipper blades leave streaks or slow down, it's a sure sign blades need oil. The clipper should be held in the position shown in Figure H to prevent oil from getting into the motor. Place a few drops of Andis Clipper Oil on the front and side of the cutter blades (Figure I). Wipe excess oil off blades with a soft dry cloth. Spray lubricants contain insufficient oil for good lubrication, but are an excellent clipper blade coolant. Always replace broken or nicked blades to prevent injury. You can clean the excess hair from your blades by using a small brush or worn out toothbrush. To clean the blades we suggest to immerse the **blades only** into a shallow pan of Andis Blade Care Plus, while the clipper is running. Any excess hair and dirt that

has accumulated between the blades should come out. After cleaning, turn your clipper off and dry blades with a dry cloth and start clipping again.

If upon cleaning your blades you find that the blades will still not cut, there may be a few fine pieces of hair trapped between the upper and lower blade. If this happens, you will need to snap the blade off the clipper. Proceed to slide the upper blade to one side, without loosening the tension spring or moving the upper blade completely out from under the tension spring (See Figure J for position of blade). Wipe the surface between the blades clean with a dry cloth, then place a drop of clipper oil where the upper and lower blades meet and also in the guide slot of the tension spring (Figure J). Now slide the upper blade to the opposite side of the lower blade and repeat this process. After completing this procedure, slide the upper blade, centering it over the lower blade. Handle or store your Andis clipper with the blades down so excess oil will not run into the clipper case.

## CHANGING THE BLADE DRIVE ASSEMBLY

If your clipper blades no longer cut properly (be sure to try more than one blade, since the blade currently being used may be dull), it could be that your blade drive assembly needs replacement.

### TO CHANGE THE BLADE DRIVE ASSEMBLY:

1. Remove blade set (Figure F).
2. Remove drive cap by grabbing both sides at top and sliding off (Figure K).
3. Remove blade drive mounting screws (Figure L).
4. **NOTE:** Before removing blade drive assembly, note the way it is positioned (this will help you in reassembly). Remove blade drive assembly (Figure M).
5. Drive bearing should be at its lowest position (See Figure N for correct position of drive bearing), if not, move it with your finger to lowest position (See Figure O for incorrect position of drive bearing).
6. Put on new drive assembly, align screw holes and press down (Figure M).
7. Reassemble blade drive by mounting screws (Figure L).
8. Replace drive cap by sliding back on clipper into position (Figure K).
9. Replace blade (Figure F).

## USE GUIDELINES FOR LITHIUM-ION BATTERIES

1. The lithium-ion battery included with your clipper does not develop a "memory effect" like a nickel-metal hydride (NiMH), or nickel cadmium (NiCd) battery. You can return the clipper to the charger at any time for a full charge, or even use the battery before a charge cycle is complete. Like most rechargeable batteries, lithium-ion batteries perform best when used frequently.
2. For maximum battery life, store the clipper in a partially discharged condition if the unit will be unused for several months. To discharge the battery, run the clipper just until the yellow light turns ON.

3. Avoid locating the clipper near heat vents, radiators, or in direct sunlight. Optimum charging will result where the temperature is stable. Sudden increases in temperature can result in the battery receiving less than a full charge.
4. Many factors influence lithium-ion battery life. A battery that has received heavy use or is more than a year old may not give the same run-time performance as a new battery pack.
5. New lithium-ion batteries, unused for a period of time, may not accept a full charge. This is normal and does not indicate a problem with the battery or charger. The battery will accept a full charge after several cycles of clipper use and recharging.
6. Disconnect the charger or the clipper from the AC outlet if extended periods of non-use are anticipated.

## SAFETY RULES FOR CHARGER AND BATTERY PACK

1. Do not insert metallic objects into the battery pocket of the charger base.
2. Do not expose the charger to excessively dirty locations. If the charger pocket becomes clogged with dust or hair, unplug the charger and gently remove hair or other debris with a soft brush or vacuum cleaner.
3. To clean external parts of the charger, use a soft brush or damp cloth. Do not use harsh abrasives, detergents, or solvents.
4. Do not use the charger designed for this Andis DBLC clipper to attempt to charge any other battery.
5. The battery contains an overload protection feature. In extreme cases, overload protection may cause the battery to enter into a safety mode, protecting the clipper circuitry. The battery will reset once the situation has been corrected and the unit has been cycled on and off. Do not attempt to power any product other than the Andis DBLC clipper with this lithium-ion battery.
6. For maximum battery life, do not store clipper or charger under 50°F or over 104°F.
7. Do not expose the charger or clipper to excessively damp conditions.
8. Take care not to drop the charger or the clipper. Do not attempt to use a damaged charger.

## CARE AND SERVICING OF THE ELECTRICAL SYSTEM

Your clipper, battery and charger are an integrated electrical system. Good electrical contact must be maintained for the motor to deliver full power and lithium-ion battery to charge properly. Limited or erratic performance caused by dirt or age can be corrected in the majority of cases.

## MANUFACTURER'S 12 MONTH LIMITED WARRANTY

This Andis product is warranted against defective material or workmanship for one year from the date of purchase. All implied warranties arising and by virtue of State law shall also be limited to one year. Any Andis product determined to be defective in material or workmanship during the warranty period will be repaired or replaced without cost to the consumer for parts and labor. The defective product must be returned via parcel post insured or U.P.S., with proof of purchase to any Andis Authorized Service Station or to Andis, 1800 Renaissance Blvd., Sturtevant, WI 53177 USA. In Canada, please call 1-800-335-4093 for repair information. Attach a letter describing the nature of the problem. Due to foreign matter sometimes found in hair, clipper blades or resharpening of blades are not subject to this warranty. Andis will not be responsible for cost of repairs or alterations made by any other person, agency or company, nor for incidental or consequential damages of any type, or for the use of unauthorized attachments. Some states may not allow exclusion of limitation of incidental or consequential damages, so the limitation or exclusion may not apply to you.

Date Purchased \_\_\_\_\_ Model \_\_\_\_\_

**To find an Andis Authorized Service Station near you log on to [www.andis.com](http://www.andis.com) or contact our customer service department: 1-800-558-9441 (U.S.) or 1-800-335-4093 (Canada)**

## GARANTÍA LIMITADA DEL FABRICANTE DE 12 MESES

Este producto Andis está garantizado contra material o mano de obra defectuosos durante un año a partir de la fecha de compra. Todas las garantías implícitas provenientes y en virtud de las leyes estatales también deberán ser limitadas a un año. Cualquier producto Andis determinado como defectuoso en cuanto a materiales o mano de obra durante el período de garantía será reemplazado o reparado sin costo para el consumidor en cuanto a piezas y mano de obra. El producto defectuoso debe ser devuelto junto con el comprobante de compra a cualquiera de las estaciones de servicio autorizado de Andis o a: Andis, 1800 Renaissance Blvd., Sturtevant, WI 53177 EEUU. En Canadá, llame al 1-800-335-4093 para obtener información sobre reparaciones. Adjunte también una carta explicando la naturaleza del problema. Debido al material extraño que a veces se encuentra en el pelo, la garantía no cubre las hojas ni su reafileado. Andis no será responsable por el costo de ninguna reparación realizada por otra persona, agencia o compañía, ni por daños incidentales o consecuentes de ningún tipo, ni por el uso de accesorios no autorizados. Algunos estados prohíben la exclusión de daños consecuentes o incidentales, de forma que dicha limitación o exclusión podría no aplicarse a su caso.

Fecha de compra \_\_\_\_\_ Modelo \_\_\_\_\_

**Para encontrar una de las estaciones de servicio autorizado de Andis cerca de su localidad, inicie una sesión en [www.andis.com](http://www.andis.com) o póngase en contacto con nuestro departamento de servicio al cliente: 1-800-558-9441 (EE.UU.) o 1-800-335-4093 (Canadá)**

## GARANTIE LIMITÉE DE 12 MOIS

Andis garantit cet appareil au premier acquéreur contre tout défaut de fabrication ou de matériel pour une durée de 12 mois à partir de la date d'achat. Toute autre garantie implicite en vertu d'une loi d'État se limite aussi à une durée de 12 mois. Tout produit Andis dont on détermine qu'il présente un défaut de fabrication ou de matériel durant la période de garantie sera réparé ou remplacé sans frais de main-d'œuvre et de pièces pour le client. L'appareil défectueux doit être retourné par colis postal assuré, accompagné de la preuve d'achat à n'importe quel centre de réparation agréé par Andis ou à Andis, 1800 Renaissance Blvd., Sturtevant, WI 53177 USA. Au Canada, veuillez appeler le 1-800-335-4093 en cas de réparation. Joignez une lettre décrivant la nature du problème. En raison des substances étrangères que peuvent contenir les cheveux, les lames et leur aiguisage ne sont pas couverts par la garantie. Andis ne pourra être tenu responsable des coûts des réparations ou des changements effectués par toute autre personne, agence ou entreprise, ou dommages accidentels ou indirects de tout genre, ou de l'utilisation d'accessoires non inclus avec l'appareil. Certaines provinces peuvent interdire les exclusions ou limitations à la présente garantie. Dans ces cas, les exclusions ou limitations ne s'appliquent pas.

Date d'achat \_\_\_\_\_ Modèle \_\_\_\_\_

**Pour le centre de réparation agréé par Andis, consultez le site [www.andis.com](http://www.andis.com) ou contactez notre service clientèle au : 1-800-558-9441 (É.-U.) ou 1-800-335-4093 (Canada)**

## ANDIS COMPANY

1800 Renaissance Blvd. Sturtevant, WI 53177

1-800-558-9441 Canada: 1-800-335-4092 [info@andisco.com](mailto:info@andisco.com) **[www.andis.com](http://www.andis.com)**